

Portofino 67





EXTERIOR AND INTERIOR DESIGN

S A T U R A  
STUDIO

ROMA

NAVAL ARCHITECTURE

zer013  
NAVAL DESIGN & CONSULTING

MILANO

SHIPYARD

DUBAI



# Specifics



## GENERAL SPECIFICATION

LENGTH OVERALL	20,27 M / 67 FT
LENGTH ON WATERLINE	19,5 M / 64 FT
BEAM OVERALL	10,20 M
DRAFT	1,65 M / 5,5 FT
DISPLACEMENT	36 T
ENGINE	2 X YANMAR 4LV170
DIESEL TANK	2 X 800 (2X1600 OPTIONAL)
WATER TANK	2 X 600
CABINS	4/5 GUEST + 1/2 CREW
BATHROOM	4/5 GUEST + 1/2 CREW
BLACK WATER TANK	400 L (APPROX)
GRAY WATER TANK	400 L (APPROX)
CLASSIFICATION	A

## RIGGING AND SAILS

MAST	DECK-STEPPED ANODIZED ALUMINIUM MAST, 2 LEVELS OF SPREADERS	
MAIN SAIL AREA	140	M2
JIB AREA	73	M2
STAY SAIL AREA	25	M2
CODEO AREA	190	M2
GENNAKER AREA (OPT)	350	M2
UPWIND SAIL AREA	209	M2
DOWNWIND SAIL AREA	351	M2

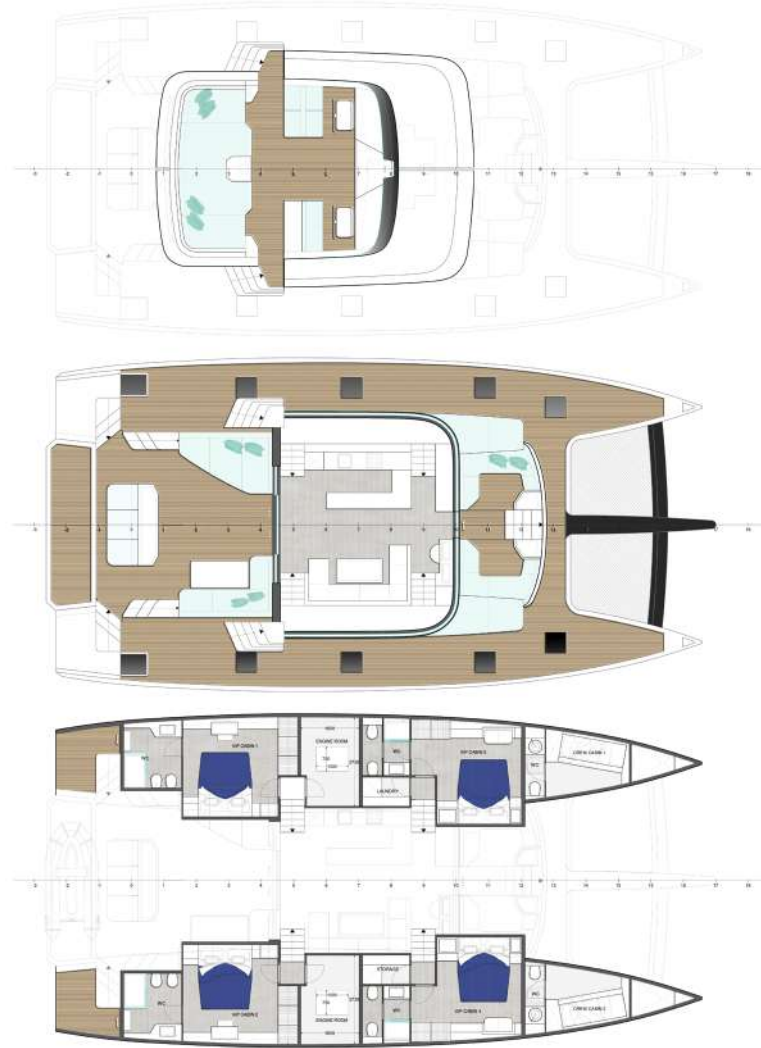
## CONSTRUCTION

HULL	ALUMINIUM
SUPERSTRUCTURE	COMPOSITE



# Layout

## 4 CABINS



## 5 CABINS



# Exterior

Portofino is a 67 feet catamaran developed to be a benchmark in the branch of luxury charter.

It was designed to optimize the guest's experience and all the on-board services, including maintenance and management by the crew.

One of the main features, which sets it apart from other catamarans, is the amidship engine room. This solution makes this space easily accessible.









## *Exterior*



Portofino 67 is available with different layouts. The spaces are optimized to increase guest's comfort and privacy, emphasizing contact with the sea and the on-board experience. The stern area is completely editable thanks to the modular sofa and the lifting platform, by increasing the deck's space or the beach club, according to the guest's necessities.





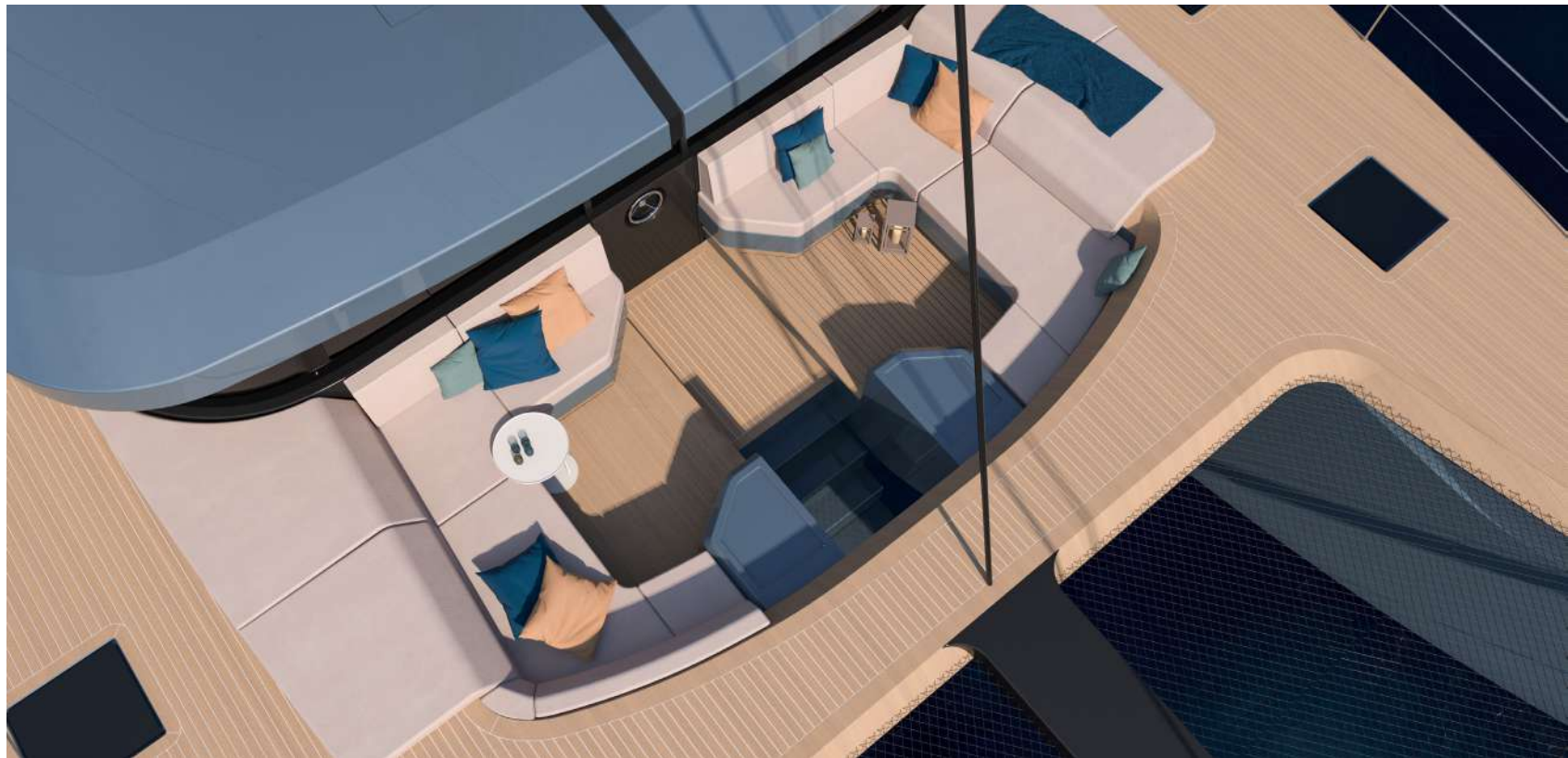


# Exterior



The bow area features a dual-function ladder that allows access to the sea. The stern cabins have a private access to the beach-area with folding terraces where guests can enjoy and relax.

The architecture of the exteriors is focused on overlapped surfaces that define both the shape and the function of the spaces.



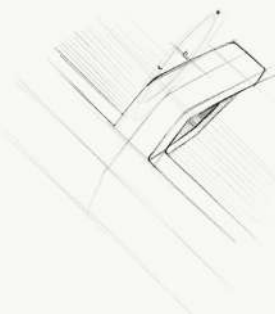
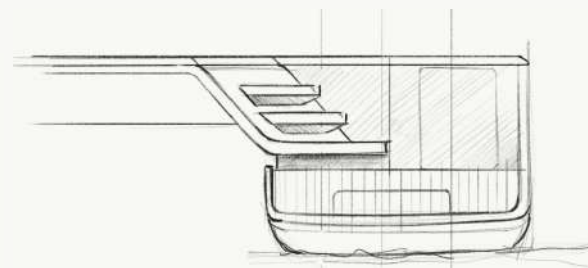
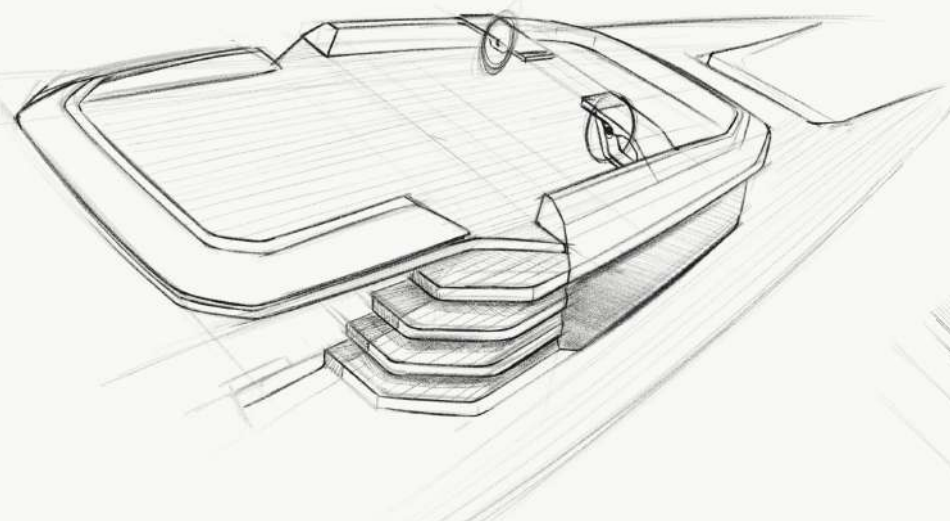
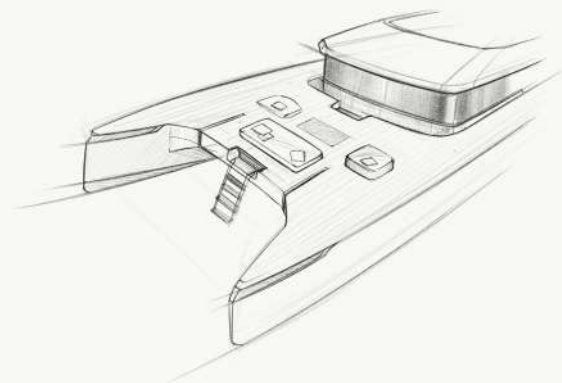
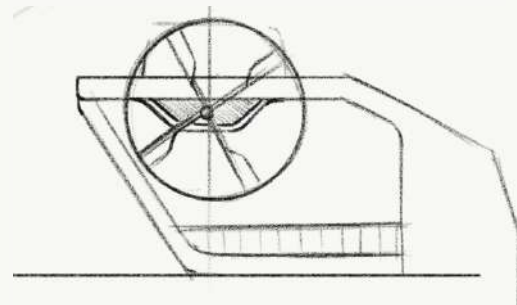
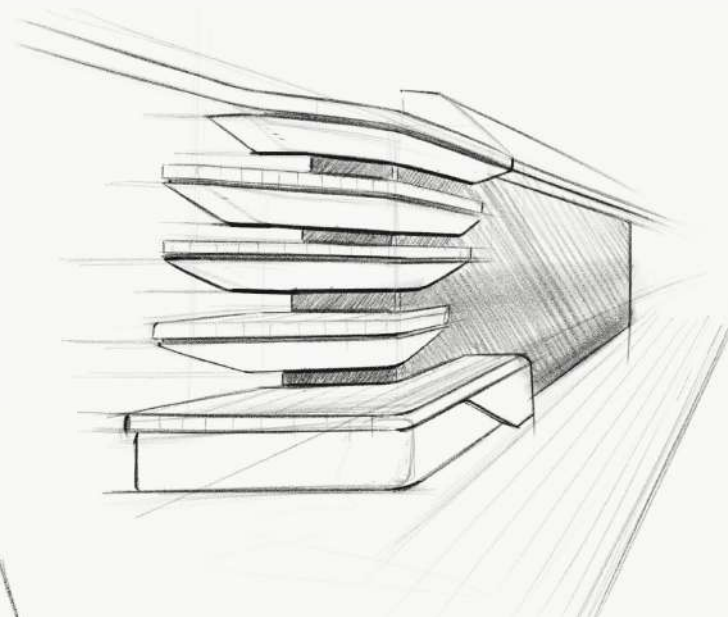
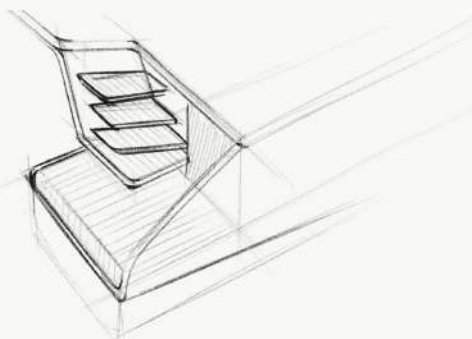
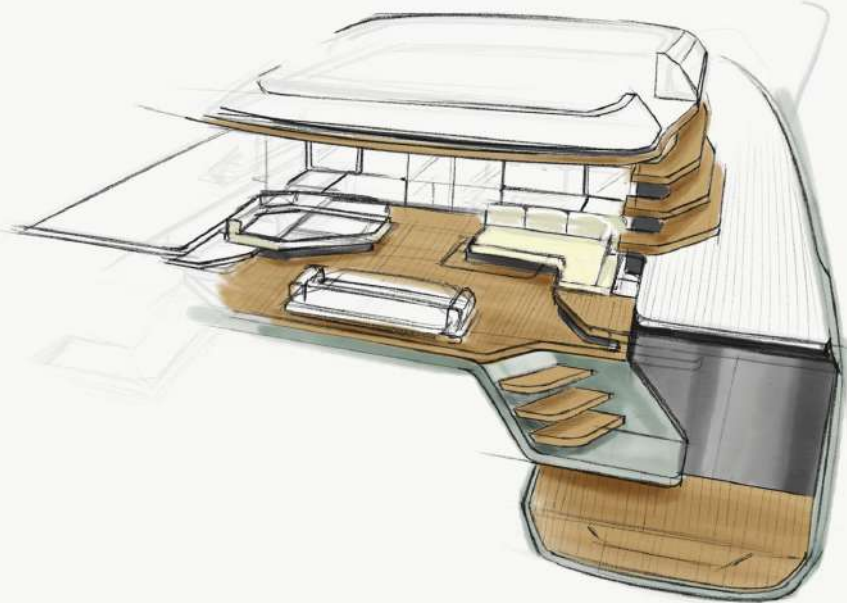








# Design process





# Interior sketches

---



VIP CABIN



LIVING AREA AND GALLEY