

 **KC54**

**KINETIC**  
CATAMARANS

# Index

---

<b>Specifications</b>	<b>11</b>
<b>Key Features</b>	<b>15</b>
<b>Standard Layout</b>	<b>17</b>
Foreward Cockpit	
Salon & Galley	
Aft Cockpit	
Aft Swim Platform & Aft Steps	
Hull Cabins	
Bathrooms / Ensuites	
Interior Furniture, Fittings & Finishes	
<b>Standard Sail Away Package</b>	<b>30</b>



















# Specifications

---

## Principal Dimensions

LOA	16.5 m	54.2 ft
LWL	16.3 m	53.5 ft
Beam	8.5 m	27.7 ft
Draft Boards Up (Standard Rudder)	1.4 m	4.5 ft
Draft Boards Up (Racing Rudder)	1.9 m	6.1 ft
Draft Boards Down (Centerboards)	3.1 m	10.2 ft
Draft Boards Down (Daggerboards)	3.2 m	10.5 ft
Displacement - Target Lightship	16,250 kgs	35,825 lbs
Displacement - Full Cruising Weight	22,500 kgs	49,600 lbs
Headroom - Salon	2.1 m	6.9 ft
Headroom - Hulls	2.05 m	6.7 ft
Bridgedeck Length	12.1 m	39.7 ft
Bridgedeck Clearance	0.95 m	3.1 ft
Fuel Capacity	1,000 l	264 US gal
Water Capacity	1,000 l	264 US gal

## Sail Plan

	Standard		Performance	
Mast Clearance - Above Water	24.6 m	80.7 ft	26 m	85.3 ft
Mast Length (Coachroof Stepped)	20.95 m	68.7 ft	22.45 m	73.6 ft
Main Sail	91 sqm	980 sqf	102 sqm	1,102 sqf
Solent / Jib	57 sqm	613 sqf	60 sqm	643 sqf
Storm Staysail	38 sqm	409 sqf	38 sqm	409 sqf
J0 / Genoa	109 sqm	1,173 sqf	115 sqm	1,238 sqf
Fractional Code Zero	123 sqm	1,324 sqf	127 sqm	1,367 sqf
Masthead Code Zero			167 sqm	1,798 sqf
Spinnaker A2	227 sqm	2,443 sqf	250 sqm	2,691 sqf
Spinnaker A3 (Cruising)	180 sqm	1,938 sqf	225 sqm	2,422 sqf

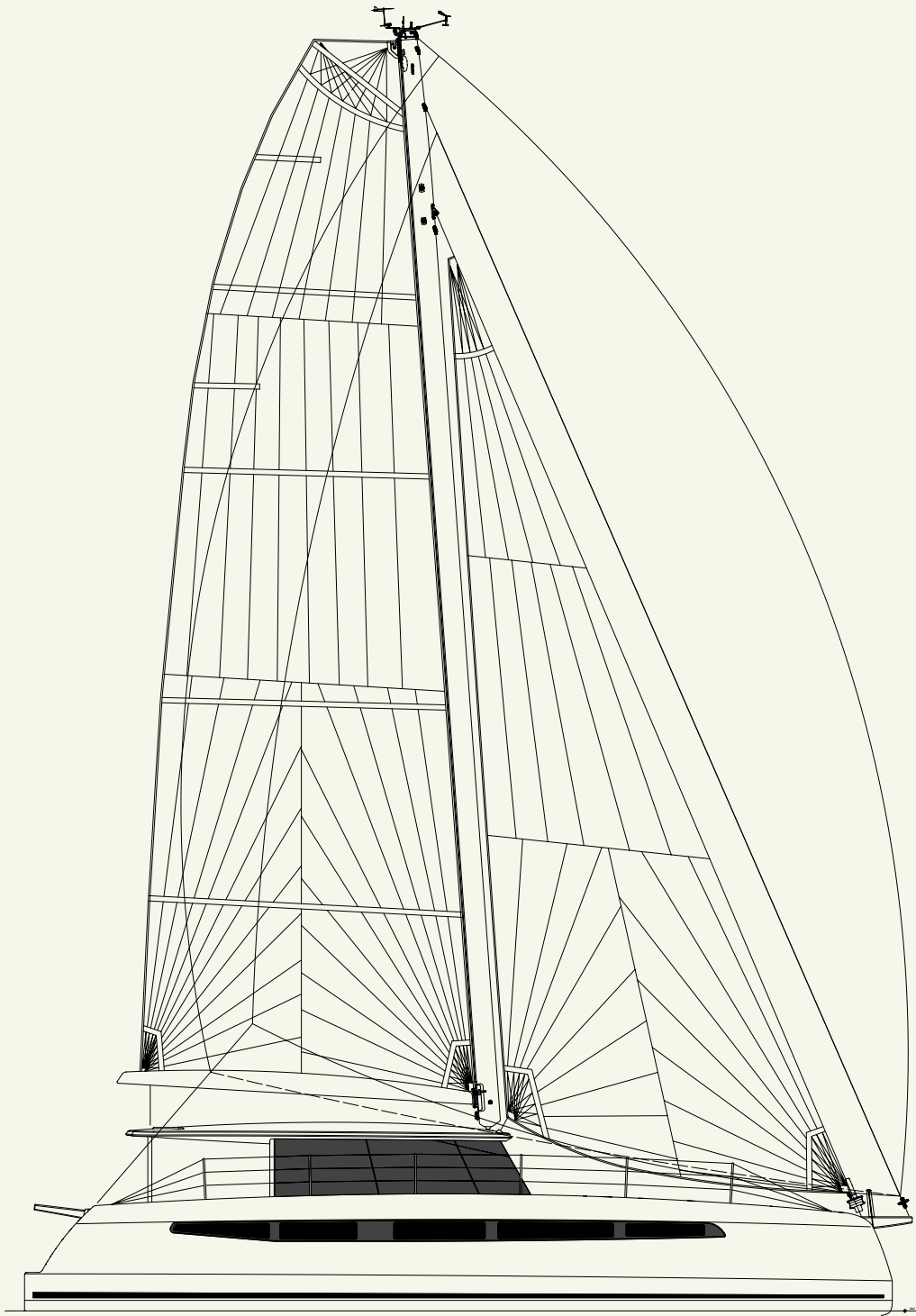
## Auxiliary Power

2 x Yanmar 4JH80 - 80hp

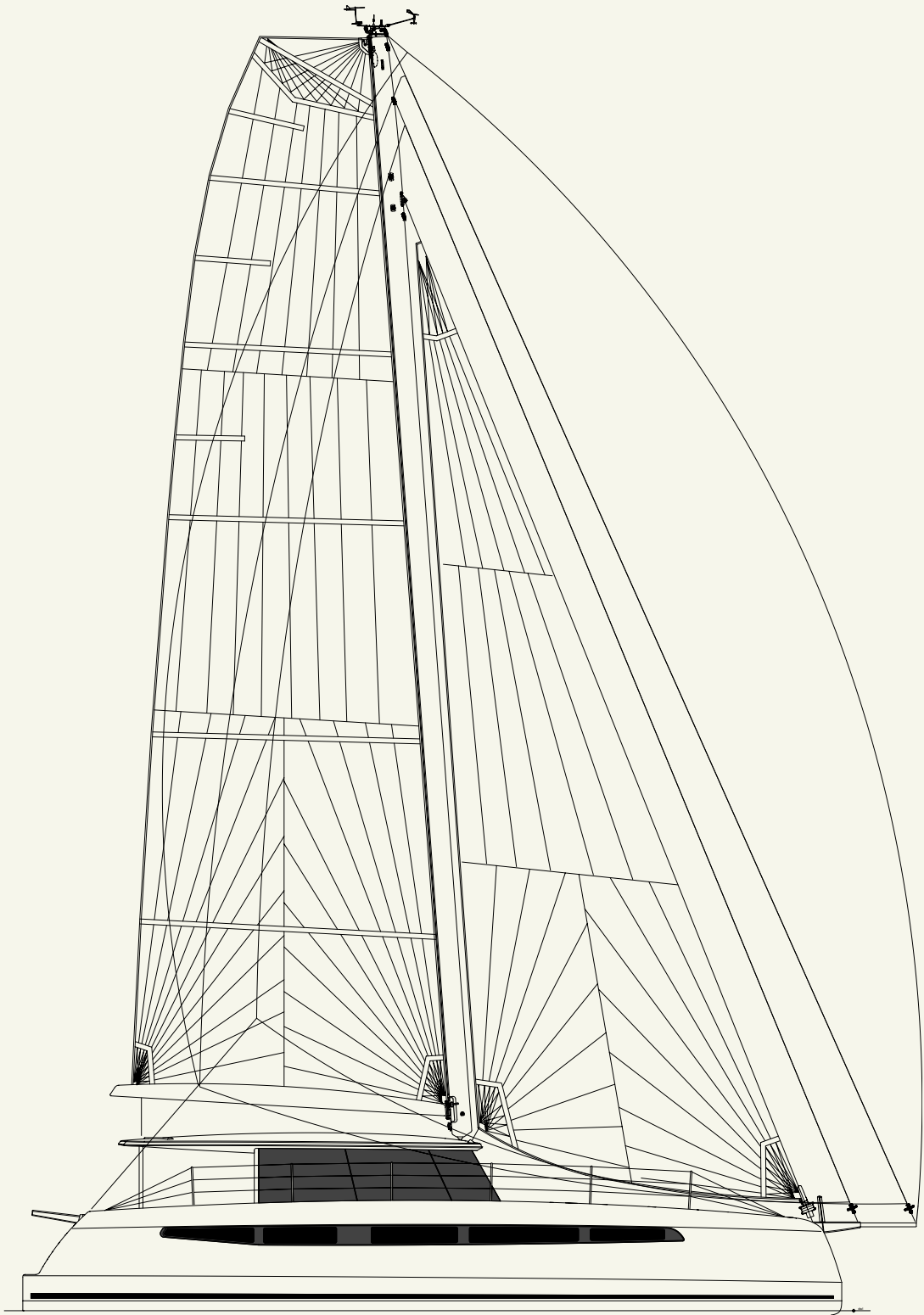
## Designers

Simonis Voogd Yacht Design

# Standard Rig



# Performance Rig





# Key Features

---

*The KC54 is a spacious and comfortable performance cruising catamaran for fun fast sailing and racing*

All carbon construction

Built in our own yard in Knysna, South Africa to full CE Category A standards

Semi-custom

- Owner's choice of layouts, furnishings, finishings, fixtures, features and equipment
- Rig and sailing set up customized for each owner
- High quality faired finish

Designed by Simonis Voogd Yacht Design

Standard set up for short-handed sailing by a cruising couple

- Mainsheet and traveler on electric captive winch and line driver for pushbutton control
- Furling boom with electric drive
- Furling forward sails and self-tacking jib
- Electric winches
- Carbon centerboards with line drivers for push button control
- Anchor and bridle deployed and retrieved from forward cockpit
- Optional drop down bow thruster
- Dockmate controller for joystick docking via handheld remote

Large forward sailing cockpit with seating for 5 ≈ becomes 3rd living zone

Drop down swim platform bridging aft steps

Coachroof mounted carbon mast and curved mainsheet traveler

Carbon rudders, longeron and low profile martingale

# Key Features

---

Optional larger rig and sail plan

Optional carbon daggerboards and C boards

North 3Di sails package ≈ or alternative from sailmaker of choice

3 Helm set up ≈ forward salon and 2 exterior aft

- Standard ≈ aft tillers
- Optional ≈ aft wheel helms
  - o Low torque carbon shaft system
  - o Unused stations disengage to maintain feel
  - o Aft helm seats retract into outer bulwarks

Spacious salon with panoramic 360 degree views

Large aft cockpit free of sail controls

Lightweight chemically strengthened, laminated, low UV, salon and hull windows

Hardened maple faux teak decking

3 cabin owner's version or 4 cabin layouts ≈ *on owner's version aft cabin converts to additional bedroom when needed*

High quality and readily available rigging and equipment

Electrical systems design by Cay Electronics (US)

Rig and rigging design by Rigging Projects (UK)

3.6m Highfield FCT console tender with 20HP Yamaha

Ample storage

Sail away package



# Standard Layouts

---

*Our boats are semi-custom to create your own dream catamaran*

## Forward Cockpit

- Seating for 5 people
- 2 rope lockers and storage locker
- Hardened maple faux teak decking
- Recessed foot winch switches
- LED courtesy lights
- B&W speakers

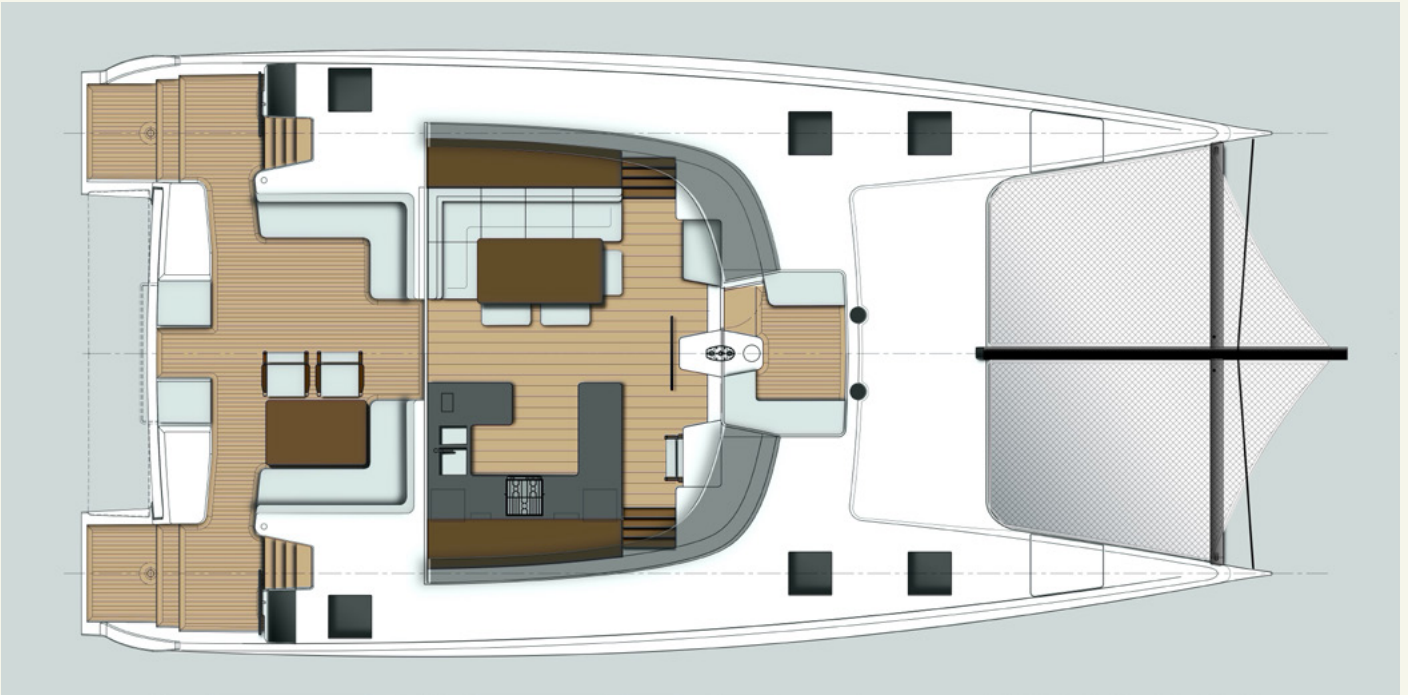
## Salon & Galley

Layout, finishings, and fixtures of choice

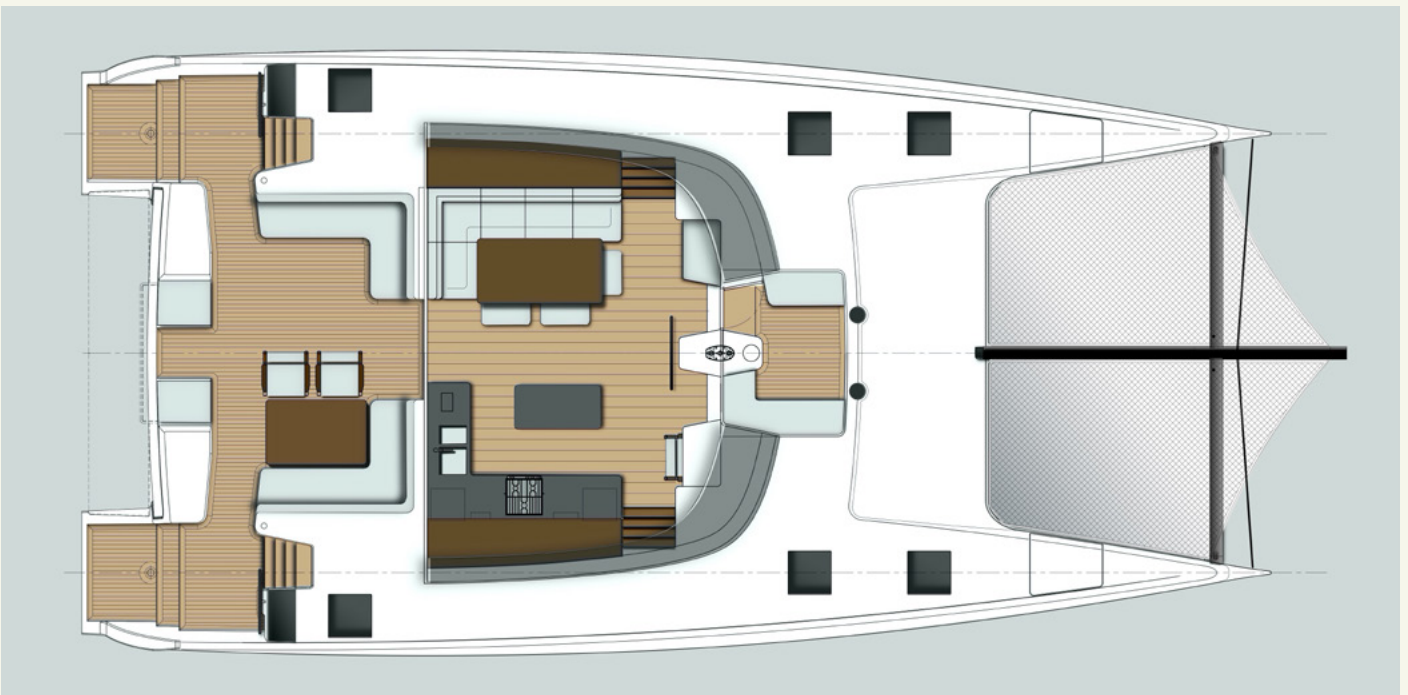
Standard layout:

- Opening door and window into forward cockpit
- Forward helm station
- Nav station with layout of choice
- Large Webasto moonroof
- 2 x Vitrifrigo fridge / freezer units (1 x 2 drawer and 1 x 1 drawer)
- Miele electric oven and induction cooktop (gas optional)
- Double sink with faucet
- Countertop accessed bin locker for appliances and provisions
- 2 x condiment / cooking oil lockers
- Through counter access to trash and recycling locker
- Liquor drawer
- Salon table with 3 ottomans and seating for 6
- Optional 12,000 BTU Dometic air conditioner
- Quality high CRI LED lighting
- Quality multi-zone stereo system
- Audio monitor speakers and subwoofer

# Standard Layouts



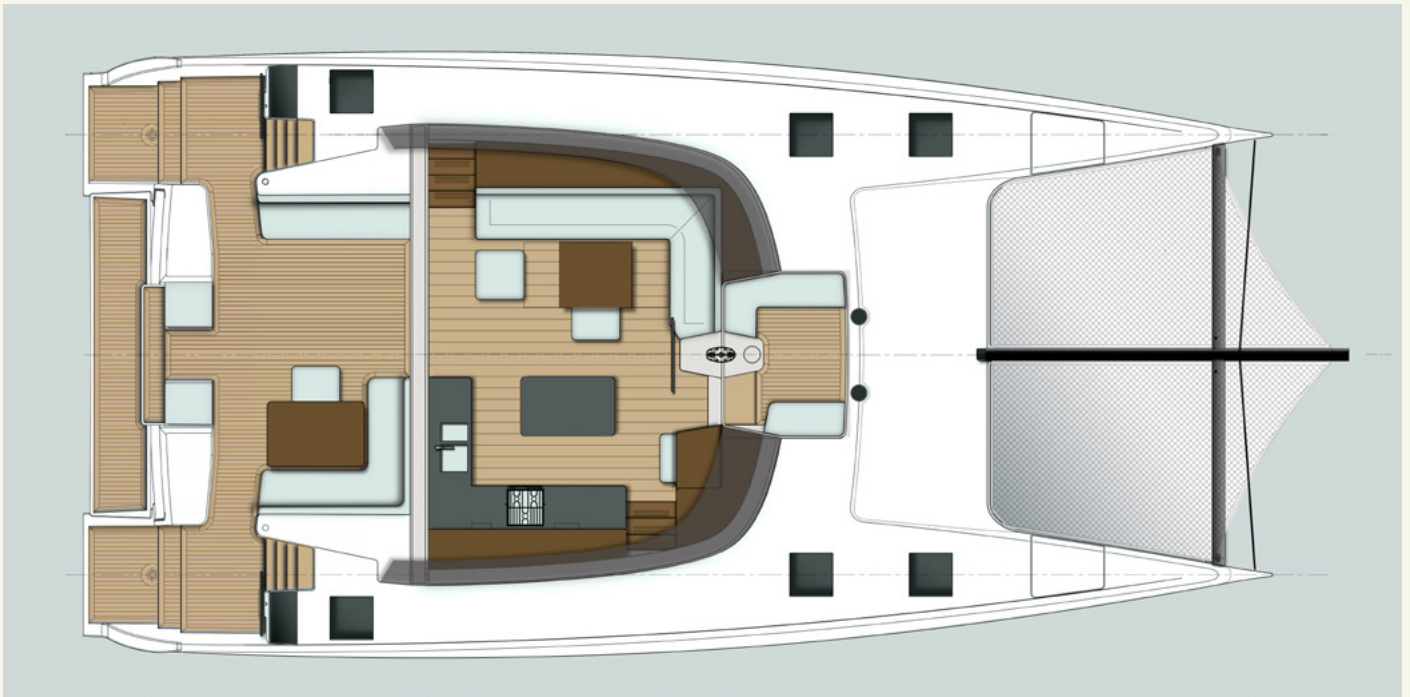
Main Salon, Full Galley



Main Salon, Island Galley

# Standard Layouts

---



Custom Layout 5402 - 4 Door Stack to Port & Starboard, Island Galley & Expandable Salon Table Forward

# Standard Layouts

---

## Aft Cockpit

- Cockpit table with flip-up extension and seating for 6
- Electric BBQ (gas optional) and drinks fridge integrated into aft lazaret
- Plentiful seating
- Hardened maple faux teak decking
- 2 x hot and cold showers on aft steps
- Quality high CRI LED lighting
- B&W speakers
- Life raft locker
- Carbon flagpole

## Aft Swim Platform & Aft Steps

- Bridgedeck transom lowers to form swim platform across aft steps
- Davits fold away when platform is lowered
- Hardened maple faux teak decking
- 2 x ring frame ottomans for swim platform ≈ creates transom couch when platform is raised
- Wet lockers under aft steps
- 4 x rod / flag holders
- LED underwater lights under bridgedeck
- LED courtesy lights
- Carbon swim ladder integrated into aft step





# Standard Layouts

---

## Hull Cabins

- Choice of 3 cabin (owner's version) or 4 cabin layouts
- Queen size beds
- Lockers and drawers to layout of choice
- Finishings and fixtures of choice
- 4 x 10,000 BTU Dometic air conditioners with touchscreen
- Quality high CRI LED lighting
- On owner's version aft cabin converts to 4th cabin ≈ or design it for your own purpose

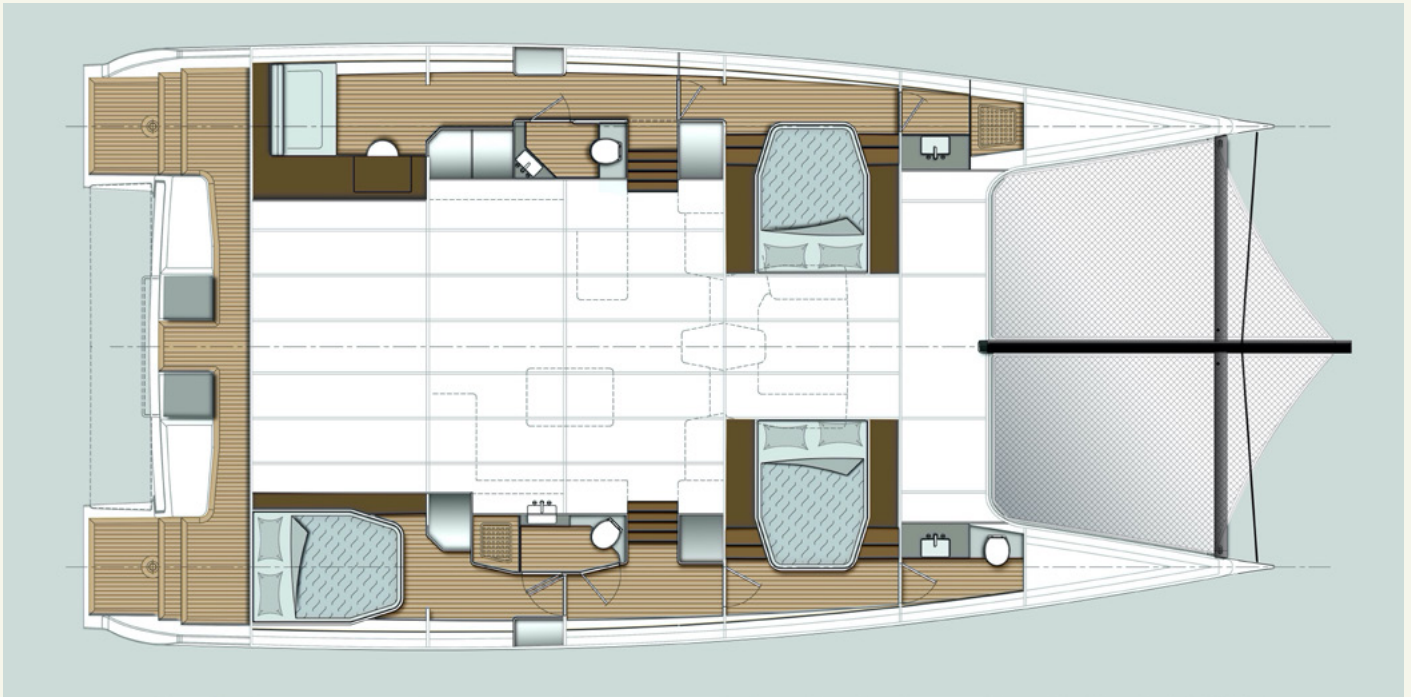
## Bathrooms / Ensuites

- Planus freshwater toilets with quiet macerators
- Carbon hand basins
- Medicine cabinets in forward ensuites
- Quality high CRI LED lighting
- Bathroom fittings of choice

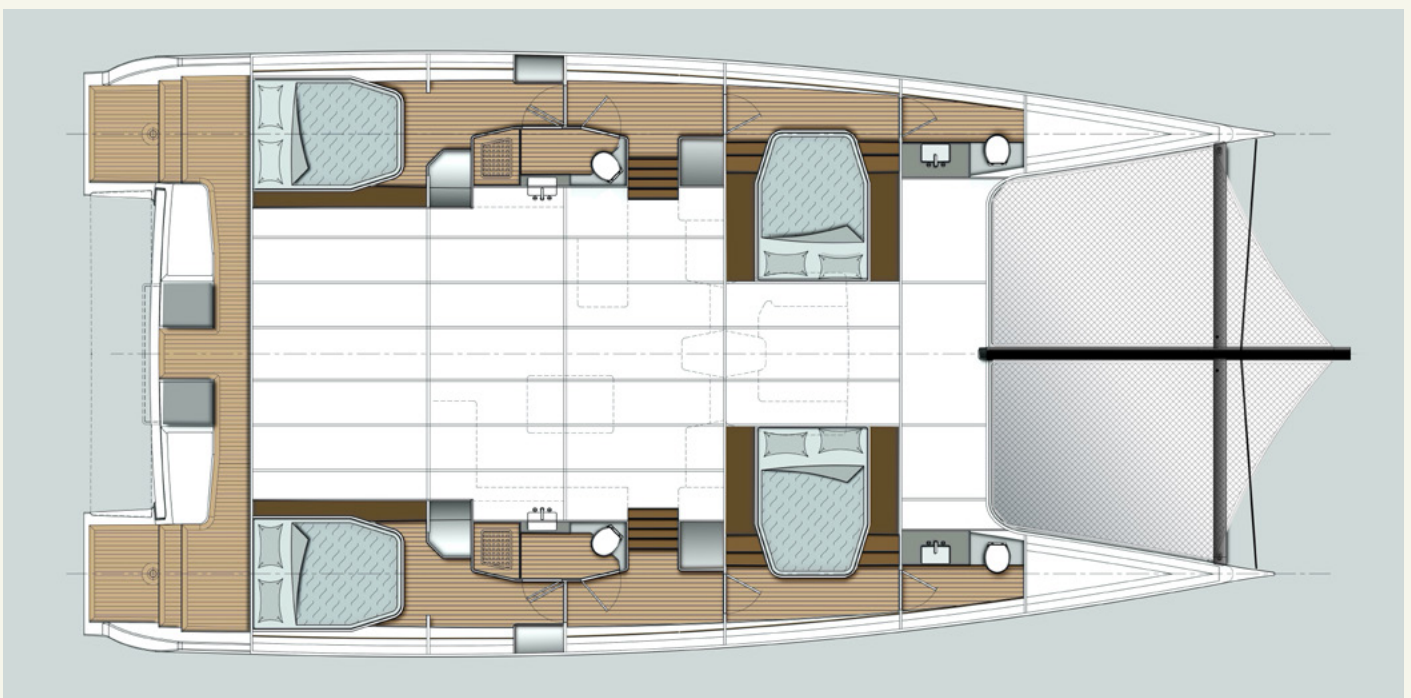
## Interior Furniture, Fittings & Finishes

- Layout of choice
- Hull and ceiling surfaces faired and sprayed for clean open finish (paneled finish optional)
- Lightweight Tricell composite furniture with hardwood inserts for fastener attachments
- Thin sintered stone countertops with carbon backing
- Timber veneers or alternative finish of choice on cabinetry
- Panel ends finished with hardwood to protect veneers
- Quality stainless steel latches, catches, slides, and hinges
- Vinyl or laminate flooring of choice (timber flooring optional)
- Fabrics of choice
- Interior colors of choice

# Standard Layouts



3 Cabin / Owners Version Layout

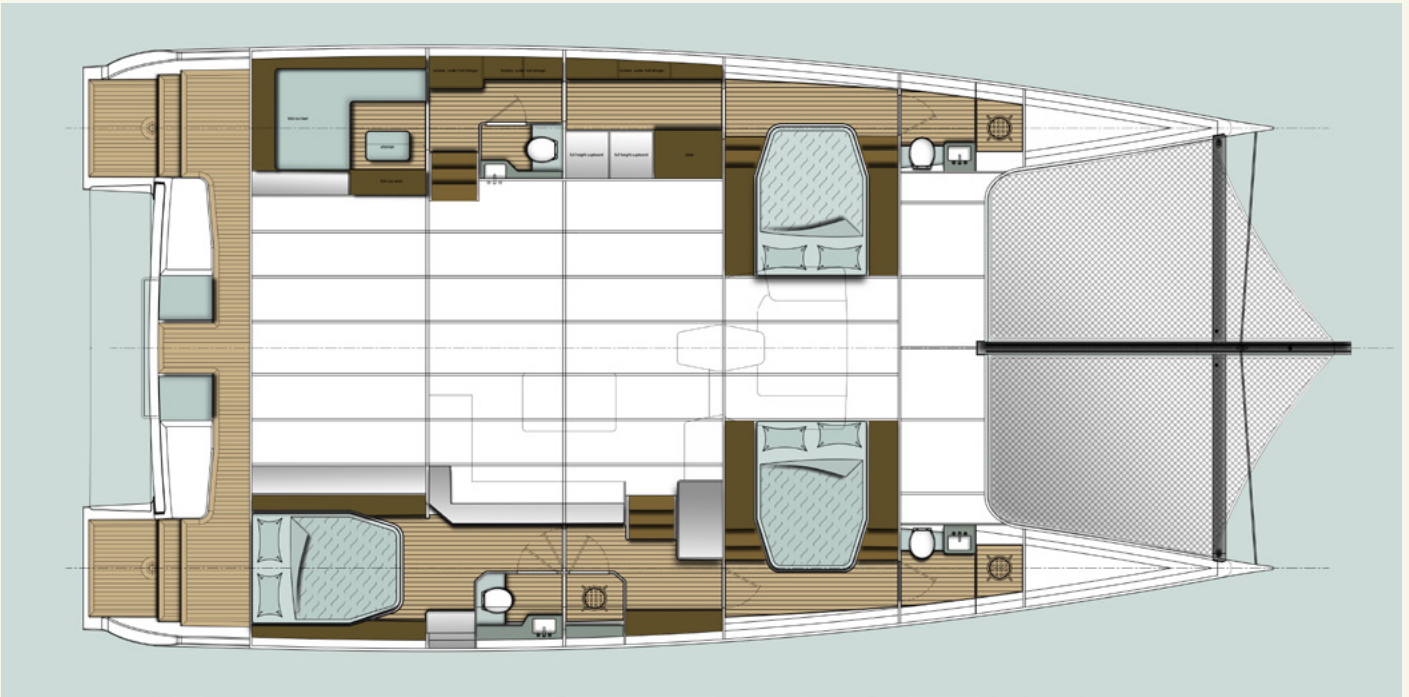


4 Cabin Layout



# Standard Layouts

---



Custom Layout 5402 - Custom Owners Suite & Starboard Bathroom Outboard









# Standard Sail Away Package

---

## Hull Construction

- Epoxy vacuum infused, full carbon fiber and Corecell construction
- Interior and exterior surfaces fully faired and painted
- Lockers and bilges faired and finished in gloss epoxy
- Exterior hull finished with 2 coats of Awlcraft 2000 in colour of choice

## Rudders & Steering

- 3 helm stations ≈ forward helm inside main salon and 2 aft exterior tiller stations
- Jefa geared, linked steering system
- Carbon rudders and rudder stocks
- Carbon wheel and tillers
- 2 x Jefa auto-pilot drives

## Centerboards

- High aspect ratio carbon centerboards with impact safety fuses
- 700w Antal electric line driver for raising and lowering of boards with position display

## Rig

- Carbon mast with single spreader diamond
- K49 (Kevlar) forestay, cap shrouds and diamond
- Integrated internal mast jack
- Carbon boom with electric furling system
- Carbon vang strut to set boom angle for furling
- Rigging Projects spectra shroud / chainplate strops
- Removable running backstays
- Clear carbon finish on mast fading into black
- Halyard locks for reacher (or J0/genoa) and staysail
- 2:1 purchase with ceramic jammers for mainsail and masthead spinnaker halyards
- Rotating camera under spreader (can be used for traveler position and mainsail roll)
- Manual boom preventer and back up mainsheet
- LED spreader downlights and uplights
- Lopo masthead light
- Steaming light
- Mainsail cover

# Standard Sail Away Package

---

## Crossbeam, Longeron & Trampoline

- Carbon cross beam
- Carbon longeron with whisker stays for trampoline sprit support
- Anchor camera
- Low profile C-Evo carbon martingale for sail optimization
- Anchor roller on cross beam for back up anchor
- Integrated spectra trampoline and sprit nets
- Lopo navigation lights

## Winches

- 2 x Harken Performa 70 electric primary winches
- Harken 60 electric pit winch
- Harken winch handles

## Main Sheet

- Coach roof mounted curved traveler and cart
- Harken electric captive mainsheet winch
- Electric traveler with 700W Antal line driver
- Push button controls

## Jib, Genoa, Reacher & Spinnaker

- Self-tacking jib track with adjustable end stops
- Provision on coachroof for sheeting J0/genoa
- Facnor single line furler for jib
- Ubi Maior continuous furlers for front sails (J0/genoa, reacher, spinnaker)

## Sails (North Sails' Package)

- Square top furling mainsail - 3Di
- Self-tacking furling jib - 3Di
- Furling reacher or J0/genoa - 3Di
- All purpose furling spinnaker
- Storm staysail
- C-Tech composite spectra wrapped battens

## Anchorage & Docking

- Anchoring and bridle attachment from forward cockpit
- Bridle with snubber
- Anchor camera
- Maxwell flush mount windlass
- Dockmate joystick boat positioning and docking control system
- 1 x 40kg Rocna Vulcan anchor, 80m 10mm high test, lightweight G4 chain
- 1 x 10kg Fortress anchor, 10m 8mm chain plus 75m x 18mm anchor rode
- 16mm mooring warps; 4 x 9m and 2 x 16m
- 6 Fendertex oval inflatable fenders with cloth covers





# Standard Sail Away Package

---

## Engines

- 2 x 4JH80 Hp Yanmar marine diesels with Yanmar SD60 sail drives
- Engine controls at forward helm station
- VC10 engine management and monitoring system
- 2 x Mastervolt 120A 24V DC alternators
- 2 x Exhaust systems
- 2 x Exhaust anti-siphon valves
- 2 x Exhaust blowers
- 2 x 12v start batteries
- Battery parallel switch
- Vibration dampening sound insulation

## Propellers

- 2 x 3-blade Gori folding propellers, counter rotating with turbo mode

## Fuel System

- 2 x 500 liter / 132 US gallon integrated tanks with baffles, inspection hatch and fuel cutoff
- 2 x deck fillers
- Reverso oil change pump
- 2 Racor fuel pre-filters for each engine and generator
- Fuel transfer capability
- Fuel manifold
- Tank level monitoring via ultra-sonic sensors and C-Zone

## Windows & Sliding Door

- Lightweight chemically strengthened, laminated, low UV, salon and hull windows
- Hard anodized companionway sliding doors to aft cockpit ≈ choice of 2 door stack with sliding windows or 4 door stack without windows
- Hard anodized door to forward cockpit
- Hard anodized opening salon window to forward cockpit
- Large electric opening Webasto moonroof in salon

## Hatches & Portlights (Lewmar)

- 6 x #60 flush hatches
- Portlight in each forward cabin opening into forward cockpit
- 2 x opening hatches in rear window of each aft cabin
- Oceanair blinds on all hull windows and hatches and forward cabin portlights

# Standard Sail Away Package

---

## Lockers & Deck Fittings

- 2 x large forepeak lockers
- 4 x foredeck lockers (plus anchor locker)
- 2 x wet lockers under aft steps
- Cockpit seat lockers
- Composite stanchions with triple dynema covered spectra lifelines on each hull
- Seasmart drop down flush cleats - 6 outboard and 2 on aft steps with chafe plates
- Seasmart fold out steps to coach roof
- Spectra trampoline
- 4 x rod / flag holders

## Electrical Specifications (110 or 220vac Systems Available)

- 220vAC 50A Shore power cable and dual 50A receptacles on stern; 1 port, 1 starboard (accepts 110 or 220V, 50 or 60 Hertz, AC shore power)
- Fisher Panda 24V DC 6 kVA Generator
- 5 x 24V 5.5kW DC Master Volt lithium-iron phosphate battery bank
- 12 x SP144 Solbian, 144W flexible walk on flush solar panels with non skid ≈ additional panels optional
- 220v and/or 110v outlets (110v outlets powered from 2.5kVA step down transformer)
- 2 X 4KW 220V AC Mastervolt Inverters
- 3 X 100A 24V DC Battery Chargers
- 2 x Solar regulators
- C-Zone distributed power, control and monitoring system
- C-Zone 10" display and iPad interface
- Tinned PVC wiring
- AC plug outlets in main salon and each cabin
- USB's for cell phone charging in main salon and each cabin
- Underwater lights
- Fireboy fire suppression system
- Lopo navigation lights

# Standard Sail Away Package

---

## Navigation & Communication

- B&G Zeus glass bridge installation
- Integrated diagnostic and monitoring ships computer with remote access
- B&G H5000 course computer
- B&G Dual independent autopilots
- B&G GPS
- B&G Halo radar
- B&G Fluxgate compass
- B&G Motion sensor
- B&G Displays at each helm station and at nav station
- Vesper Cortex VHF with AIS, position geo-fence, and remote monitoring
- Speed sensor in both hulls
- Depth and temperature sensor in both hulls
- B&G dual mast head units
- Ritchie 6" backlit compass
- Dual band cellular and Wifi range extender

## Entertainment System

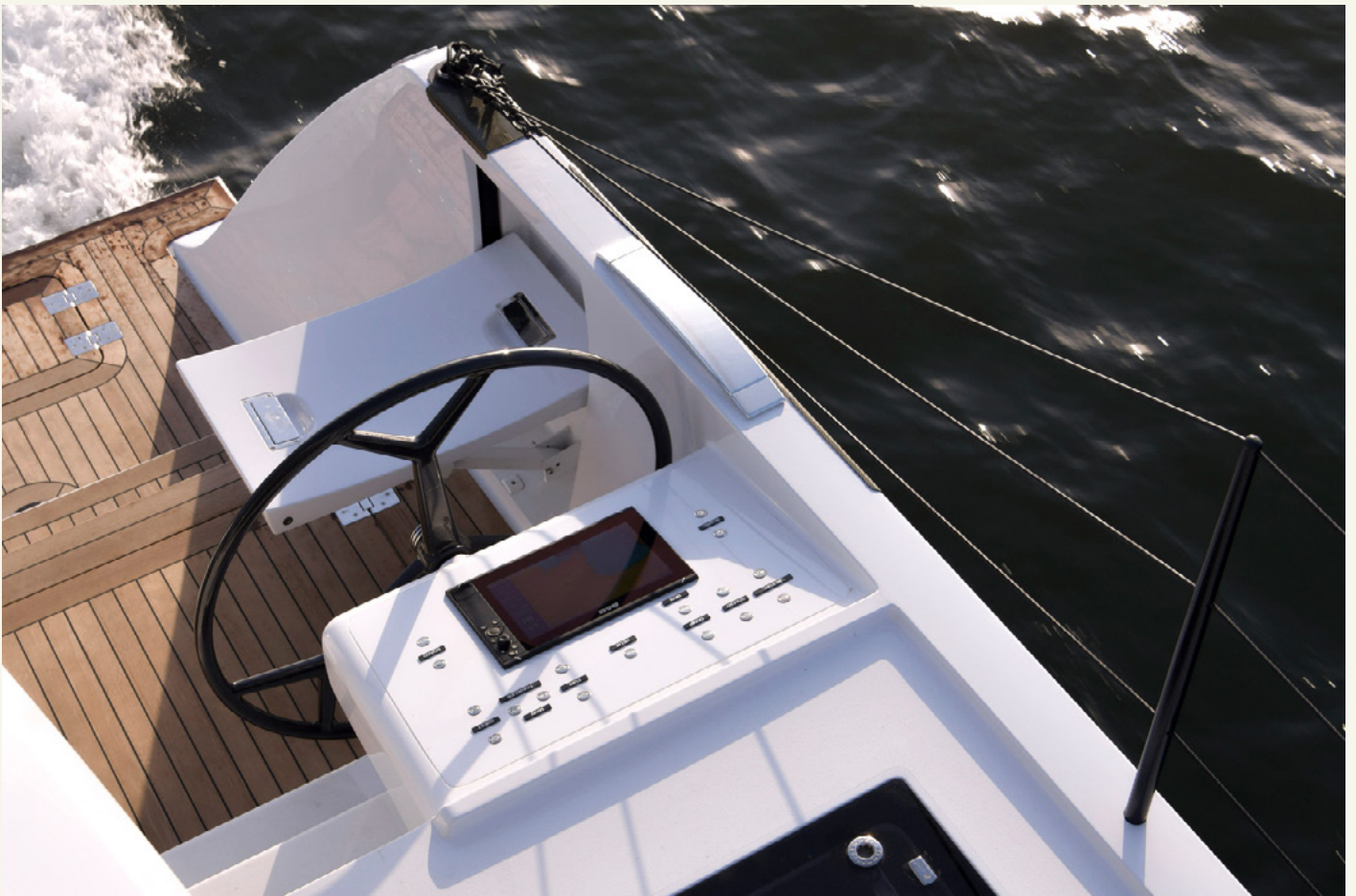
- JLL or equivalent music server and multi zone amplifier(s) with DAC and lossless bluetooth streaming
- Hard drive for music library
- B&W speakers in forward and aft cockpits
- Audio Monitor speakers plus subwoofer in salon

## Fresh Water System

- 2 x 500 liter / 132 US gallon integrated tanks c/w baffles and inspection hatches
- 2 x Deck fillers
- 2 x Headhunter Excalibur water pumps
- Tank level monitoring via C-Zone
- Tank transfer capability
- 2 x 50 liter / 13 US gal 110VAC calorifiers
- Spectra water maker 24vDC 2,650 Liters / 700 US Gallons per day
- 2 x hot water circulation pumps
- Drinking water filtration system with galley faucet
- Fresh water foot pump in galley

## Bilge Pumps

- Limber holes in main bilges
- Small and large pump with high water alarm in each main bilge and engine room
- Portable 24V crash pump
- C-Zone monitoring and manual override for all pumps



# Standard Sail Away Package

---

## Black & Grey Water Systems

- Sump with pump in each forward shower
- 2 x 500 liter (264 US gal total) integrated grey water tanks
- 3 x 250 liter (198 US gal total) integrated black water tanks
- Each tank is C-Zone monitored with ultrasonic sensor and solenoid operated outlet

## Deck Wash

- Blaster saltwater pump with quick connect couplers forward and aft
- Fresh water pump with quick connect couplers forward and aft

## Safety

- Lightning diffuser system
- Goiot escape hatches under gangway steps
- Removable lifeline across each aft step
- Liferaft locker

## Davits & Tender

- Integrated carbon davits with electric winch
- Davits fold away when swim platform is down
- Lightweight Highfield 3.6 meter, FCT center console tender with 20hp Yamaha outboard
- Hardened maple faux teak decking

## Awnings

- Forward cockpit awning with forward stanchions
- Exterior salon window covers
- Moonroof cover
- Aft cockpit side awnings
- Fabrics of choice



# Contact

[contact@kineticcatamarans.com](mailto:contact@kineticcatamarans.com)

[www.kineticcatamarans.com](http://www.kineticcatamarans.com)