

# DUFOUR CATAMARANS 48

## Launch of a new tenor



### **Is it true then?**

The rumor was spread over the last few months...

Well, yes! Dufour is proud to announce its entry into the multihull market with the launch of the Dufour Catamarans brand, as well as the first model of the range, unveiled in world premiere at the Nautic Paris 2017... the Dufour Catamarans 48.

The scale model, the 3D video and the virtual tour specifically made for this event attracted a large audience both surprised and enthusiastic by this new project.

Detailed presentation of the Dufour 48 Catamarans.



**Umberto Felci,  
key architect**

As an incontrovertible partner since 2002, the shipyard could not go further without the talented Umberto Felci and Lorenzo Giovannozzi to draw the lines of the first Dufour Catamarans.

Popular for their technical and visionary skills, they have been able to present a modern, elegant and innovative project, in line with the distinctive symbols of the Dufour Touch.

*“We have developed an innovative catamaran in line with the Dufour philosophy on which we have been working over the last years.*

*The Dufour Catamarans 48 keeps the codes of the Dufour identity, specifically with the lines of the hull and their inserts, the porthole shapes and the deck plan free of any obstruction.”*

**The choice of a rig with self-tacking jib**

In order to ensure maximum safety and easy handling, the mast was pulled back on the centreline of the boat in order to balance the weights and limit tensions on the mainsail.

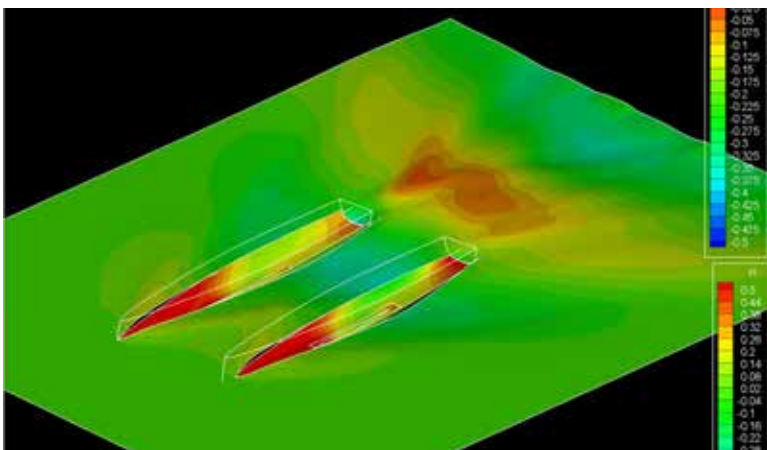
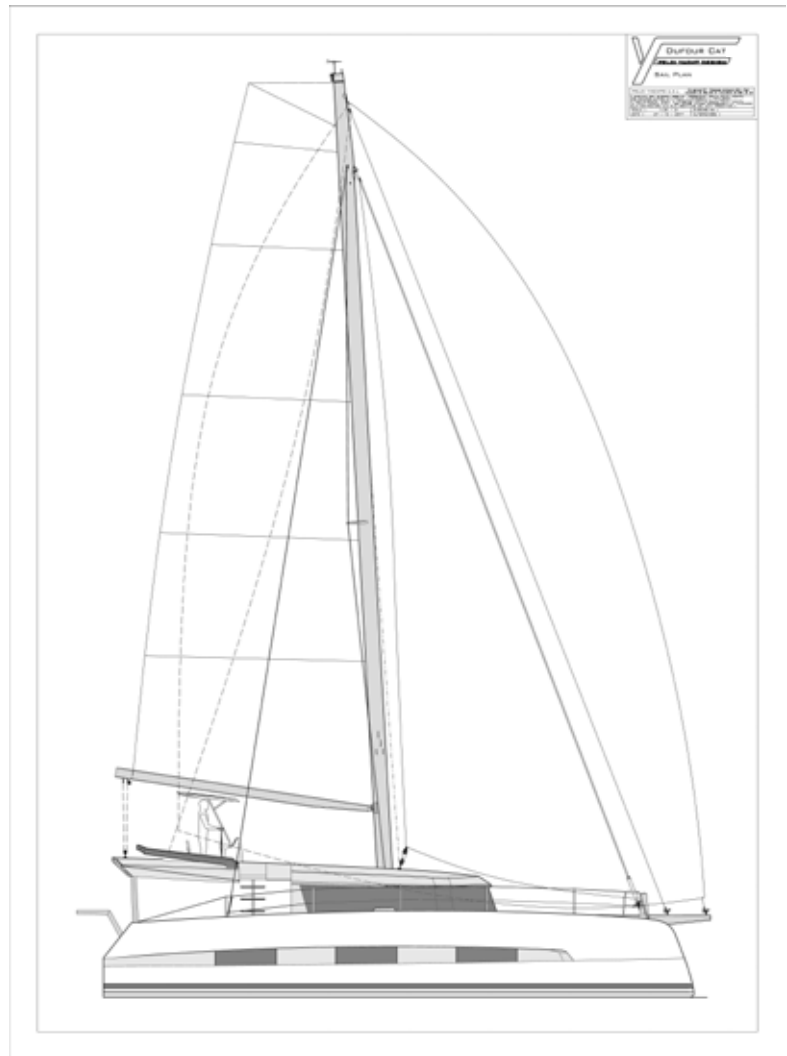
The headsails are larger and offer new possibilities, especially the use of a self-steering jib, as large as a genoa.

The Dufour 48 presents 124 m2 of sail area close hauled, with 76 m2 of mainsail

and 48 m2 of jib, a combination that makes it easy to control in any situation, even while short handed.

In addition, the tilted boom well appreciated on the Dufour monohulls, facilitates lowering and secures the crew on the fly bridge.

The outside rope is optional, to support a code 0 or a gannaker.



**Engineering research and construction**

The Dufour 48 Catamarans project has benefited from high-technology search and resources, notably the CFD analysis, which revealed great hydrodynamic qualities.

The entire structure has been analysed and validated by the finite element method (FEM) in every detail.



### Balance between inside and outside space

The Dufour 48 Catamarans presents a perfect balance with the deck plan, the cockpit space, roof and foredeck divided into 1/3 of the total length.

The large proportion of the roof differs from the models of the category and offer the thought of a very wide space of the living room area. Indeed, it is a testimony of a balanced project in terms of exterior and interior space, developed to offer the greatest comfort in all seasons.

At the front, there are two outstanding sunbathing areas, separated by a large storage box and the anchor well.

The sidedecks are spacious, and secured by hull bulwarks along the entire length.

At the cockpit level, there are two steps, one on the port side and one on the starboard side, offering the access to the fly-bridge.

1. Integrated & sliding panel to prevent water from dripping into the cockpit in case of rain.

2. The jib furler passes over the top of the roof to be operational from the helm station.



### The flybridge by Dufour

The Dufour 48 Catamarans fly-bridge is a key element of this project. Elaborated as a second cockpit, it expands considerably the living space outside. Traffic is ideal with an access from two stairs - through the cockpit from starboard, and the sidedecks from port.

He is equipped with a low table and surrounded by large seats and a wide sunbathing area.

It also features the helm station...

### A "Super Yachts" helm station

Located on the fly bridge, the helm station offers an absolute advantage in terms of visibility.

The large console inspired by the superyachts, integrates all the equipment in a very ergonomic layout.

The three mainsail winches, jib and gennaker are easy to reach.

The helmsman also benefits from an adjustable seat and a bimini, available in both canvas or rigid.



**A functional cockpit as an extension of the living room**

The cockpit space of the Dufour 48 is similar to a 50 feet boat or more. Indeed, the 8-metre boat's width provides excellent space distribution and ideal traffic on board.

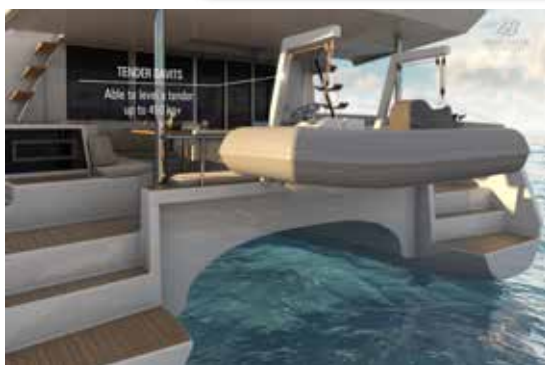
There is a large table for 8 people, multiple seating and relaxation areas, as well as the famous plancha created by Dufour Yachts.

The various portholes provide an incredible natural light in the rear cabins.

The large window door opens completely for full communication with the lounge area.



48  
DUFOUR  
CATAMARANS



**Standard rollers or hydraulic platform ?**

Two options are available for dinghy lifting. Fully integrated into frame, both systems guarantee to support weights up to 450kg\*.





### Living room area and 360° vision

The Dufour Catamarans 48 has been designed to satisfy the requirements of both owners and renters wishing to live on board throughout the year. Offering a large living room was essential and the result is perfectly achieved.

The kitchen connected to the cockpit, is fully equipped and ergonomic with its many storage spaces.

At the front, there is the office space - chart table, equipped with a repeater screen and an autopilot control with joystick, to control the boat from the inside.

The sofa space - dining table, can be modulated in 3 positions - low table, dining table - double bed, with the seats smartly stored in the central furniture to keep the space as clear as possible.

The wide 360° window facing the sea provides plenty of light.

The storage are various and well thought out, with a large console with drawers, ready to fit everything you need.



1. Two large opening panels ensure ventilation of both saloon and cockpit.

2. The kitchen is also ventilated by an opening window





### Owner's cabin

Occupying the entire port float, the owner's suite will seduce at first sight.

The cabin which is equipped with a 200cm x 1.70cm bed is particularly bright and ventilated, thanks to its many opening portholes.

It also includes a large office area with sea view and convenient high closets and drawers.

Ladies will be delighted by the huge dressing room and the large sofa.

The head is in line with the highest standards, with a countertop washbasin on Corian worktops, a luminous furniture and a large separate shower.





### Guest cabins with independant access

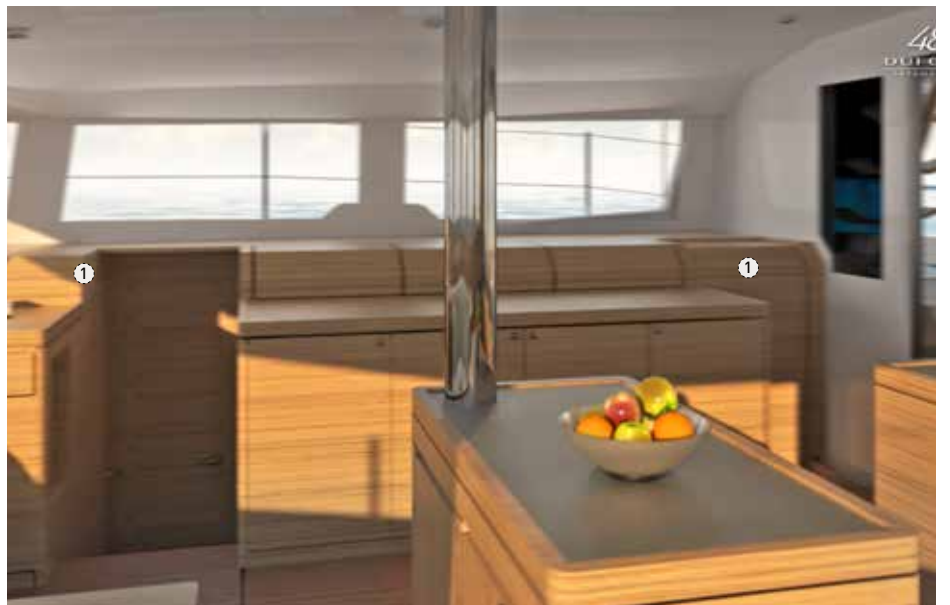
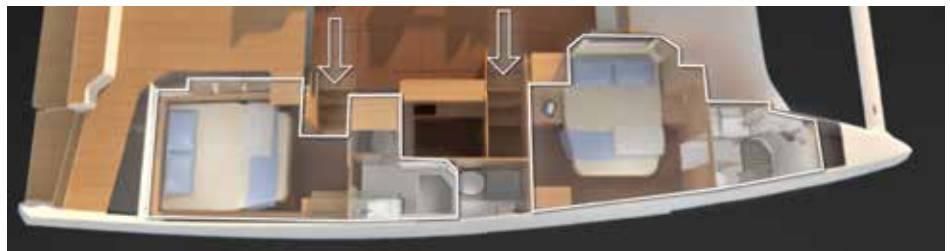
The Dufour Catamarans 48 presents an unusual configuration to access the guest cabins.


To guarantee the best possible privacy in each space, a double way towards the floats has been designed - one to port, the other to starboard.

So, all the cabins have a totally separate access and remain accessible from the lounge.

Each cabin includes its own bathroom with separate shower, as well as many closets and storage.

Ventilation and brightness are also ideally suited.



-  1. Two sliding panels isolate the access to the cabins for full privacy.



**Layout A**  
**3 cabins - 4 heads + skipper**

**Port side float**

- > 1 owner suite including a head and a separate shower
- > 1 skipper cabin

**Starboard float**

- > 1 double aft cabin with independent access, including a head and a separate shower
- > 1 double front cabin with independent access, including a head and a separate shower
- > 1 service area
- > 1 day head





### **Service area**

In line with the functionalities of a large yacht, the service area of the Dufour Catamarans 48 brings a huge extra value.

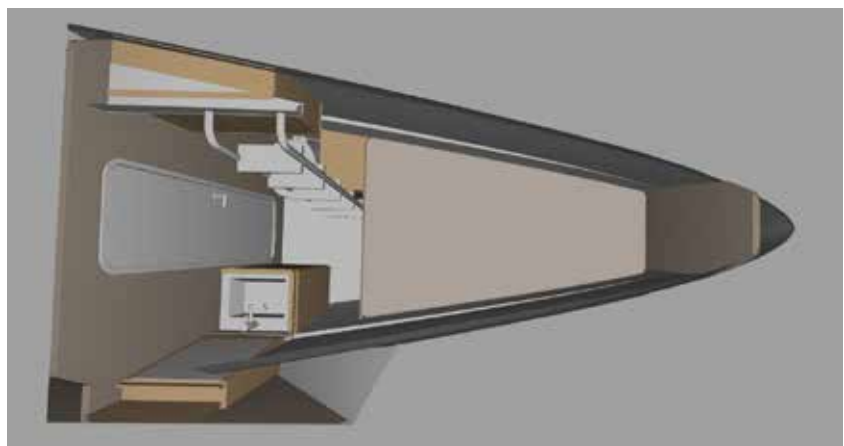
Available in 3 and 4 cabins, it can be used as an extra kitchen, storage area, laundry room and many other possibilities according to your needs.

### **The skipper cabin**

Available in every available layout, it is both functional and comfortable.

The skipper has a 190cm x 115cm bed, and an integrated head with shower and toilet.

The main access is through the front deck, but an access door to the float remains present if necessary.





### **Layout B**

**4 cabins - 5 heads + skipper**

#### **Port side float**

- > 1 double aft cabin, including a head and a separate shower
- > 1 double front cabin, including a head and a separate shower

#### **Starboard float**

- > 1 double aft cabin with independent access, including a head and a separate shower
- > 1 double front cabin with independent access, including a head and a separate shower
- > 1 service area
- > 1 day head
- > 1 sail locker



### **Layout C**

**5 cabins - 5 heads + skipper**

#### **Port side float**

- > 1 double aft cabin, including a head and a separate shower
- > 1 double front cabin, including a head and a separate shower

#### **Starboard float**

- > 1 double aft cabin with independent access, including a head and a separate shower
- > 1 double front cabin with independent access, including a head and a separate shower
- > 1 double cabin with pullman
- > 1 day head
- > 1 sail locker



# Technical specifications

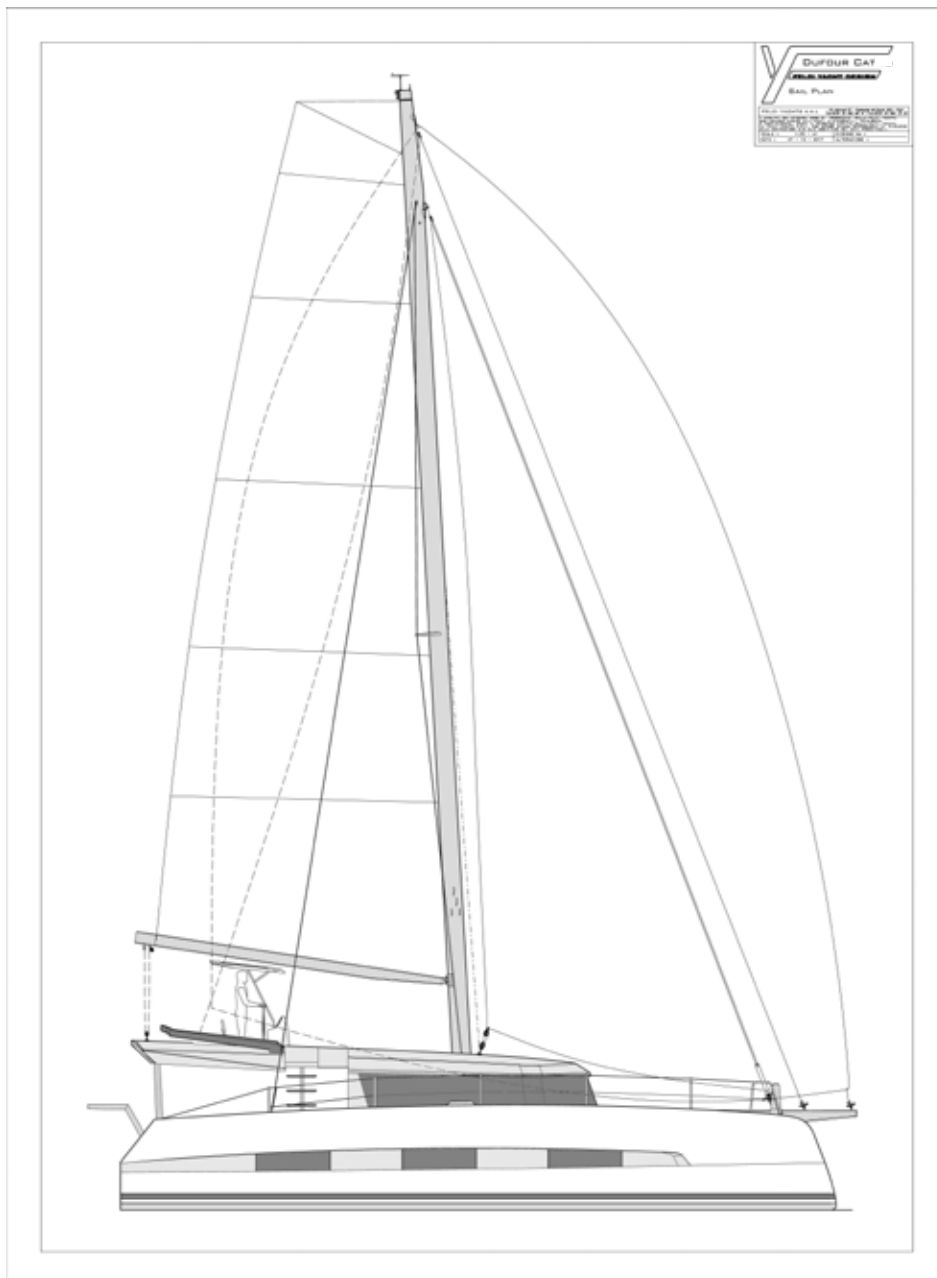
---

<b>Architect</b>	U. Felci
<b>LOA (incl. bowsprit)</b>	48.23 ft
<b>Hull length</b>	46.59 ft
<b>Feet length</b>	46.58 ft
<b>Midship section</b>	26.25 ft
<b>Draft</b>	4.26 ft
<b>Lightship weight</b>	32 970 lbs
<b>Water tank capacity</b>	153.97 gallons
<b>Fuel tank capacity</b>	197.97 gallons
<b>Engine</b>	2 x 50 hp
<b>Engine(opt.)</b>	2 x 60 hp



# Sail plan dimensions

---



<b>Sail area</b>	1 334 ft <sup>2</sup>
<b>Mainsail</b>	818 ft <sup>2</sup>
<b>Self tacking jib</b>	516.67 m <sup>2</sup>
<b>Code 0</b>	968.75 ft <sup>2</sup>
<b>Gennaker</b>	1 184 ft <sup>2</sup>



**More info - please contact :**

**Paolo SERIO**  
**Product Marketing & Communication Director**  
**[paolo.serio@dufour-yachts.com](mailto:paolo.serio@dufour-yachts.com)**

**To download the video and the files - visit :**

**[www.dufour-catamarans.com/en](http://www.dufour-catamarans.com/en)**

