

*Portofino 47*





EXTERIOR AND INTERIOR DESIGN

S A T U R A  
STUDIO

ROMA

NAVAL ARCHITECTURE

zer013  
NAVAL DESIGN & CONSULTING

MILANO

SHIPYARD

DUBAI



# Specifics



## GENERAL SPECIFICATION

LENGTH OVERALL	15,6 M / 51 FT
LENGTH ON WATERLINE	13,7 M / 45 FT
BEAM OVERALL	8,4 M / 27 FT
DRAFT	1,3 M / 4,3 FT
DISPLACEMENT	15000 KG / 33100 LB
ENGINE	2 X YANMAR 4JH57 (114HP)
FUEL TANK	2 X 200 L / 440 LB
WATER TANK	2 X 250 L / 550 LB
CABINS	3 CABINS - 6 GUEST
BATHROOM	2
BLACK WATER TANK	2 X 110 L / 240 LB (APPROX)
GRAY WATER TANK	2 X 95 / 210 LB (APPROX)
CLASSIFICATION	A

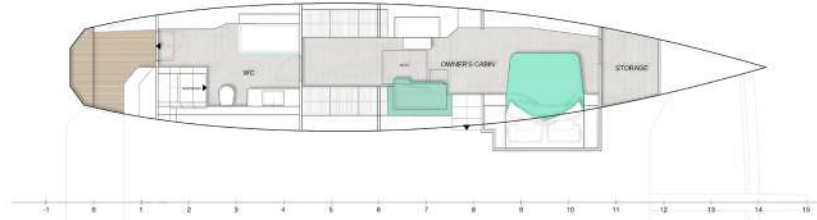
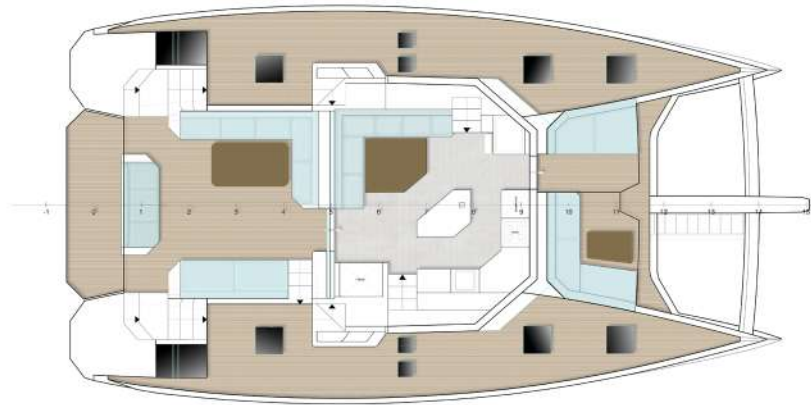
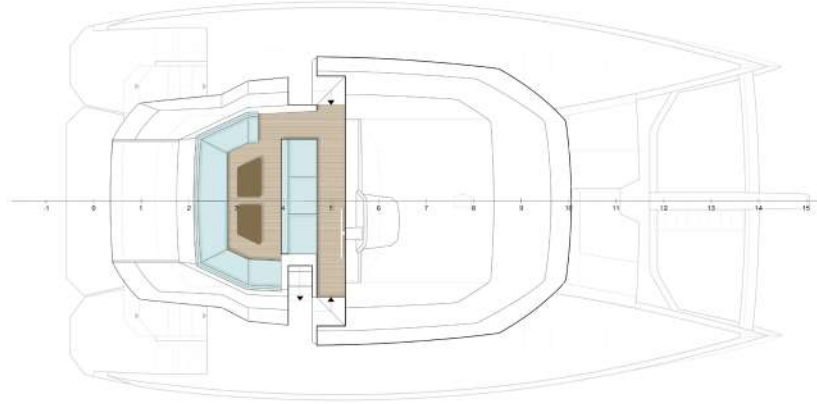
## RIGGING AND SAILS

MAST	DECK-STEPPED ANODIZED ALUMINIUM MAST, 2 LEVELS OF SPREADERS
MAIN SAIL AREA	87 M2 / 893 SQFT
JIB AREA	54 M2 / 581 SQFT
STAY SAIL AREA	15 M2 / 161 SQFT
CODEO AREA	100 M2 / 1076 SQFT
GENNAKER AREA (OPT)	120 M2 / 290 SQFT
UPWIND SAIL AREA	141 M2 / 1500 SQFT
DOWNWIND SAIL AREA	187 M2 / 2010 SQFT

## CONSTRUCTION

HULL	ALUMINIUM
SUPERSTRUCTURE	CARBON

# Layout





# Exterior

Portofino 47 is the new catamaran presented by Portofino Shipyards. It was designed to optimize the guest's experience and all the on-board services. One of the main features, which sets it apart from other catamarans, is the amidship engine room.

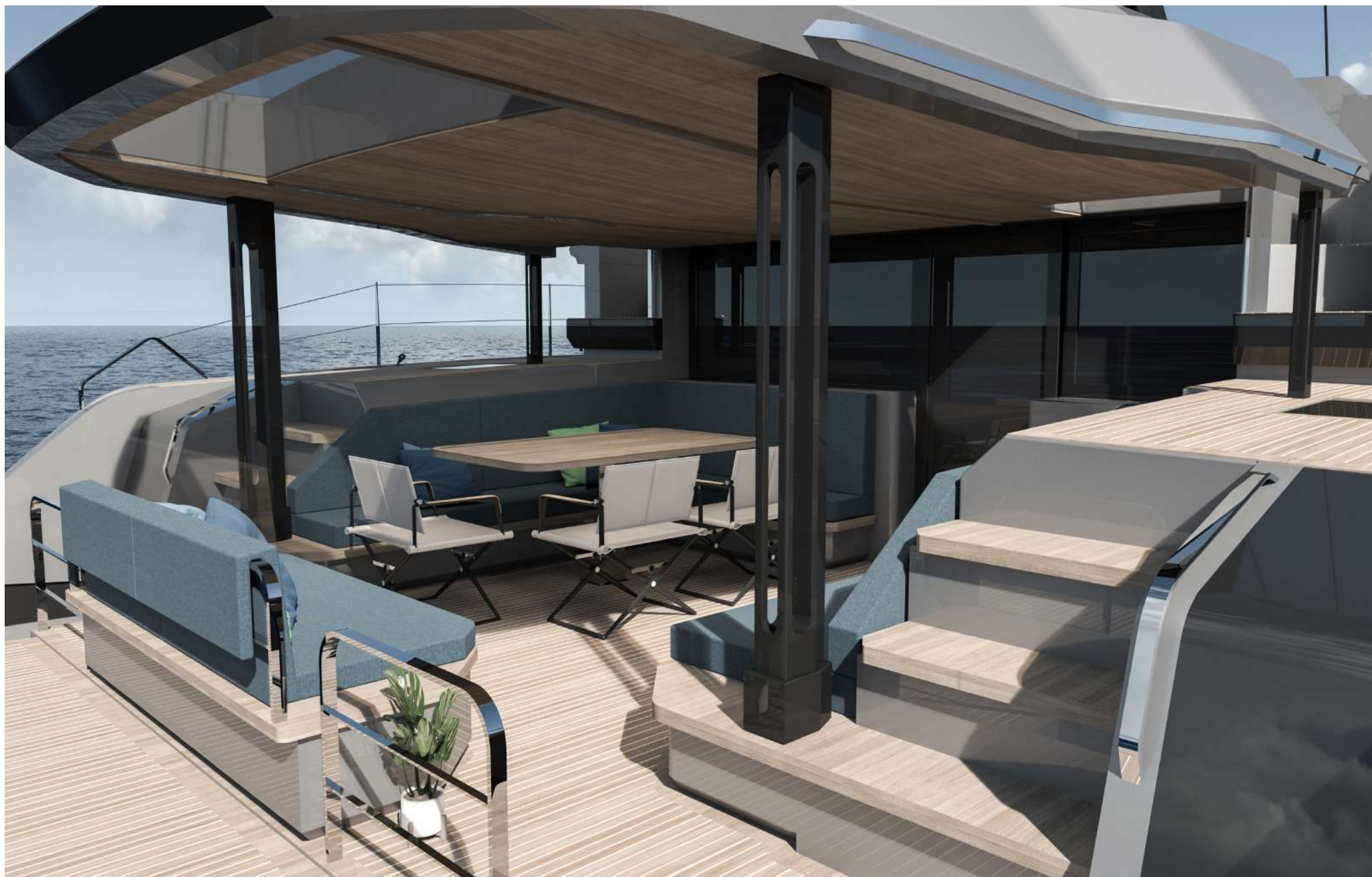








*Exterior*





## Features



Portofino 47 has a particular layout. The spaces are optimized to increase guest's comfort and privacy, emphasizing contact with the sea and the on-board experience. The stern area is completely editable thanks to the modular sofa and the lifting platform.







# Exterior



The bow area features a door that allow access to the lounge where guest can relax and enjoy outside space, and also a ladder that allows access to the sea. The architecture of the exteriors is focused on overlapped surfaces that define both the shape and the function of the spaces.













# *Design process*

---

